



# THE RACING ARSENAL

TPR MAGAZINE  
BEST OVERALL  
PERFORMER  
INTAKE SYSTEM BATTLE



TIMEATTACKFORUMS.COM



# WE ARE BUILT BY PERFORMANCE

# Weapon-R Competition Products

USA Head Quarters



At Weapon-R Competition Products our goal is to build the highest quality and best performing aftermarket parts at affordable prices for today's sport compact cars. Weapon-R parts are designed by performance gear head enthusiasts. Weapon-R has built their reputation as an industry leader for over a decade, through its stringent commitment to research, and continuously evolve its cutting edge manufacturing processes to give you the highest quality and best value performance products the industry has to offer.

All of Weapon-R products are carefully designed using the latest computer simulation and modeling techniques, followed by extensive dyno testing. Weapon-R draws its experience from being involved in various forms of motorsports, we currently a consultant for Formula Racing Development and is responsible for building the Formula Ford Campus race cars for the driver development program in China.

We have also formed strong partnerships with top tuning companies like Auto Select Japan and Turn 3 Performance Ltd. to develop parts for the Nissan Skyline R35 and Radical Sports Cars China for their new SR4 race cars. In late 2009, Weapon-R has recently forged an alliance with Lamborghini Shanghai to R&D and manufacture performance products for their vehicles.

Latest CAD/ CAM techniques are used when designing all products, followed by extensive lab testing with our in-house Dynapack Dynamometer. Weapon-R products are rigorously street and race tested to ensure each part will perform flawlessly in your vehicle in the most extreme conditions.



# Secret Weapon Intake Systems

USA Patent # 7,263,961B2



2008 Honda Civic Si



The Secret Weapon Intake was designed to dramatically increase air intake speed and volume to the engine.

The concept is to create two different air velocity profiles, one traveling at a higher speed than the other.

This technology increases air volume and speed to the engine, which naturally feeds the engine 3x more air than conventional air intake systems.

Each Intake System is Dyno Tuned for Maximum Performance and optimum Air / Fuel Ratio's. Our intake pipes are mandrel bent out of high quality 6061 Aluminum, tig welded to ensure a proper seal and then polished to a show quality finish.



2008 Nissan Skyline GTR

The SW Air filter features a tuned velocity stack to increase velocity and decrease turbulence. The Air Filter features Open Pore High Density Foam, for higher flow and better filtration.

Over 350 applications for Car's , Trucks , SUV's

## Neo - Ti Edition SW Intake System



Newest Addition to the WR Performance line-up, is the development of the Neo -Ti Treated Products.

This treatment to our products, gives parts a Titanium Finish without the high titanium price.

Check website for updated applications !

( 2009 Honda Accord Intake in Neo-Ti Color w/ Ram Air Kit )



2008 Honda Civic



2008 Mitsubishi Lancer

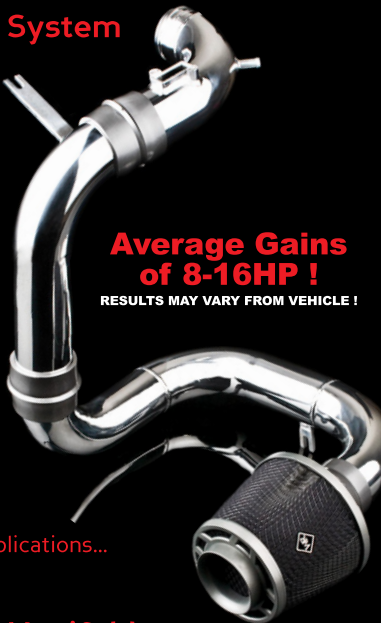
## Cold Air SW Intake System

The newly designed Cold Air SW Intake was produced to further increase horsepower, by combining our patented Dual Air Flow Technology and Denser Cold Air through Cold Air Induction.

Each Intake System is Dyno Tuned for Maximum Performance and optimum Air to Fuel Ratio's.

Our intake pipes are mandrel bent out of high quality 6061 Aluminum, tig welded to ensure a proper seal and then polished to a show quality finish.

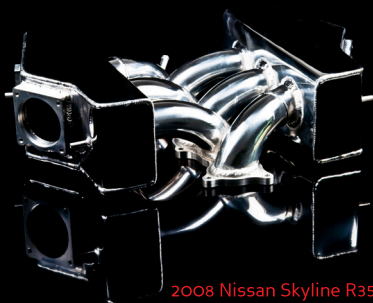
Check website for updated applications...



**Average Gains  
of 8-16HP !**

**RESULTS MAY VARY FROM VEHICLE !**

## High Volume Intake Manifold



2008 Nissan Skyline R35

Our High Volume Intake Manifolds have been proven to make over 15-30hp on Naturally Aspirated applications and 45-90hp on Forced Induction Applications.

Our Manifolds offers quicker Turbo spool and huge top end power increases over the OEM factory manifolds.

We CNC machined velocity stacks, flanges and carefully Tig Weld the entire manifold to prevent Leaks and Cracks. Made from High Grade AL6061 for Durability and Strength. No Modifications needed for installations.



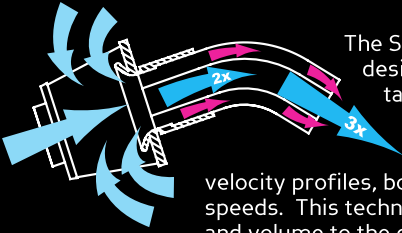
2007 Honda Fit



2008 Honda Civic

Check website for updated applications !

## How the SW Intake Works...



The Secret Weapon Intake was designed to multiply air intake volume to the engine.

The concept is to create two different air velocity profiles, both traveling at different speeds. This technology increases air speed and volume to the engine, which naturally feeds the engine 3x more air than regular intake systems.

Our Patented technology was developed experimenting with three basic laws of physics, Boyles Law , Bernoulli Equation and the Coanda Effect. ( USA PATENT # 7,263,961B2 )

## Secret Weapon Air Filter

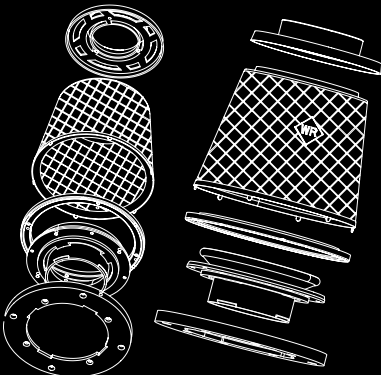


The Secret Weapon Air Filter is a result of years of testing and tuning of air intake velocity, Air mass and Airspeed. The Result, an Air filter that performs better than any other air filters available in the market today. The Secret Weapon Air Filter provides maximum airflow with the protection of high quality dense Poly Urethane Foam. Studies have shown Flow rates of up to 80% more Air and Better Dirt Filtration with Foam Filter than the conventional cotton filter.

The Secret Weapon Air Filter's main feature is an CAD Designed and Flow benched Tested Velocity Stack, which greatly increases airflow ,airspeed and air mass into the engine, therefore increasing engine performance. Another one of the Secret Weapon Air Filter's great features are the capability to be disassembled to be cleaned and then re-assembled after cleanings of the foam filtering element.

Weapon-R Air Filters do not clog, because our filters feature Open Cell Technology Foam, which allows air to flow around the captured dirt. Unlike other filters, Weapon-R Air Filters provides great airflow even when it gets dirty.

Available in different inlet sizes and lengths.



### Features:

Flow Bench Designed Internal Velocity Stack

Ram Air Kit Attachment on top of SW Air Filter

Polyurethane Open Cell Technology Foam Filter

Dual Cage design to secure Polyurethane Foam

## Dragon Air Filter



Weapon-R Dragon Filter is one of the highest rated air filter in the world. Rated "Best Overall Performer" outperforming Cold Air & Short Ram Intake systems in the 2003 Tuner Performance Reports, Intake system Battle.

The Dragon Air Filter provides maximum airflow, with the protection of high quality dense Polyurethane Foam. Studies have shown up to 80% more Air and Better Dirt Filtration with Foam Filter than the conventional cotton filters. Featuring technology from the Secret Weapon Air filter, an internal tuned Velocity Stack provides more air into the engine.

Available in different inlet sizes and colors.

## Ram Air Kit



The WR Ram Air Kit converts any Intake system into a Ram Air Intake. Ram Air Technology is a technique to produce a cold air intake charge into the engine, to get more free Raw Naturally Aspirated HP.

The components in the Ram Air kit are all computer designed and made from a high temp fire resistant plastic, to resist heat soak which robs horsepower from your engine. It's simple to install this unit, you just connect the hose to the top of your Air Filter and mount the velocity stack in the lower part of the grill and attach the hose.

The Ram Air kit comes with the Ram Air Velocity Stack, Flexible 3" Hose and Mounting hardware. Replacement Ram Air Adapters are also sold separately.

To use this kit on our DRAGON AIR INTAKE SYSTEM you will need to purchase an Dragon Intake Ram Air Adapter.

## Dragon Filter Heat Shield



Complete your intake system with the Dragon filter heat shield. This Shield bolts directly to the top of your Dragon Filter, and completely shields the filter from any heat to create additional Horsepower.

To further complement your intake system you can attach the hose from your Ram Air Kit to the top of the Shield to achieve a enclosed direct Cold Ram Air Charge to your engine. This Dragon Filter Heat Shield is made of heat resistant plastics to resist any Heat soak, which may occur in daily driving.

Available in : Red / Blue / Yellow / Chrome / Clear

## Air Flow Meter Adapter Intake Kits

Our AFM Adapter kits replace the OEM air box into an open element intake system to increase performance, due to the restrictions of an Air Flow Meter and the OEM air intake system. Air filter and all hardware are included in the Kit. [Check website for updated applications.](#)



## Aluminum Catch Tanks



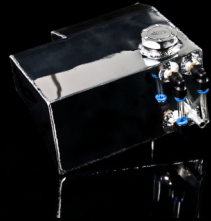
Neo-Ti Coolant Reservoir



Neo-Ti Oil Catch Tank



Evo 7-9 Oil Catch Tank



240sx Coolant Reservoir

Made of Billet 6061 Aluminum and TIG Welded with Billet Aluminum machined fittings for a proper fitting seal. These tanks were designed with racers in mind to get down the track safely, by sending all your overflowing fluids to your catch tank and not the ground. Each Kit also comes with an aluminum bracket and stainless steel clamps for mounting. Included in each kit is 3 Feet of Clear Fiber Reinforced Tubing, to route your coolant or Oil Vapors. Vehicle specific tanks are made to fit to OEM bolt holes and require no modifications for installation.

Some kits are also available in Neo-Ti Finish. [Check website for updated applications.](#)

## R35 Suction Pipe Kit

The Skyline R35 suction pipe kit is 15mm larger than the OEM units. Designed to allow more air to OEM turbos. All sensors and fittings are retained in OEM location. Made from AL6061 aluminum and tig welded, each unit is then polished to a high quality finish.



This part mates perfectly to OEM airbox and WR Secret Weapon Intake System. Comes complete with all mounting hardware, no modifications to vehicle are needed for installation.

## Intercooler Pipe Kits



The WR Intercooler Pipe Kit offers improved airflow, faster boost response and higher boost pressure at redline compared to the restrictive and OEM rubber charge pipes.

In addition to the performance benefits, each pipe is hand polished to a show quality finish. Kit includes 3ply fiber reinforced silicon couplers, T-Bolt clamps and all mounting hardware needed for installation. Special for in Neo-Ti Finish.

[Check website for updated applications.](#)

## Stainless Steel Downpipe & O2 Housing Kits



The Weapon.R Down pipe & O2 Housing Kits replace the undersized factory down pipe in favor of significantly larger units. The WR down pipes are one of the largest on the market. Made of 304 Stainless steel it features CNC machine mandrel bending which clears the factory lower arm bars. TIG welded, flanges are CNC machined which is critical for a proper seal. ( R35 Down pipe & O2 Housing kit shown )

[Check website for updated applications.](#)

## Race Headers & CEL Eliminator Kit



Weapon.R 4-2-1 Race Headers are designed with Long primary Tubes for High RPM Power and Stepped sized Tubing for Higher Torque Gains.

Ideal for all forms of Racing, Best for Vehicles with High Lift Cams and High RPM Rev Band. We use a 2.5" - 3" Collector for High Exhaust Flow and better performance gains. The Catalytic Converter is eliminated on all Race Headers.

Our CEL Light Eliminator gets rid of the Check Engine Light and will not effect the performance of your vehicle. We carefully test and research the correct amount air / fuel ratio which is needed for the vehicle to correctly operate. [Check website for updated Race Header applications !](#)



## Inter-Lock Universal Muffler System



The WR Inter-Lock Universal Muffler System allows tuners, to change the length and style of your exhaust system.

The muffler and exhaust tips are completely made of 304 stainless steel and then tig welded and hand polished to a show quality finish. This system was designed to allow adjustment of length and style of the exhaust tip, perfect for vehicles with newly added Body Kits. Muffler available in Polished and Satin Black.

[Check website for exhaust tips and muffler configurations.](#)

## Stainless Steel Turbo Manifold

Weapon.R has released the ultimate Stainless Steel turbo manifold. Engineered to offer the ultimate in performance and reliability, Weapon.R manifolds spool faster, last longer, and produce more reliable power across the entire RPM range than any other manifold on the market.



**Key design features include:**

Made of 3mm Thick Casted 304 Stainless Steel Bends. The merge collector creates a turbulent free area for exhaust gasses to enter the turbine housing in even pulses. Robotic TIG welding for ultimate strength and longevity. Flange surfaces machined flat ensuring a perfect seal. Weapon.R manifolds are CAD / CFD designed.

[Check website for updated applications.](#)



## Fabrication Materials

**Fabrication Materials include:**

O2 Sensor Bungs  
6061 Aluminum U-Bends  
304 Stainless Steel U-Bends  
Air Flow Meter Sensor Adapters  
304 Stainless Steel Casted Elbows

# Chassis Stiffening Components



Front Under Chassis Bar



Middle Under Chassis Bar



Rear Cage Bar



Front Tie Bar



Rear Tie Bar

By tying in the upper suspension points at the shock towers, the strength and rigidity of the chassis increases while the overall handling performance of the vehicle improves.

## Weapon-R Strut Tower

Bars are made from ultra strong and lightweight AL6061 and offer the highest strength-to-weight ratio of any strut bar on the market. Each bar is hand polished and brackets are powder coated.

Weapon-R under chassis bars are constructed of aircraft quality AL6061 and are designed to tie into the chassis with easy installation. Weapon.R under chassis bars increase chassis rigidity and performance handling characteristics by strengthening under carriage points to prevent chassis distortion while under hard cornering and aggressive driving. [Check website for updated applications.](#)

# Thermal Barrier Intake Manifold Gasket



We have developed a special high temperature insulating gasket which replaces the OEM intake gasket.

By reducing heat transfer from the cylinder head, to the incoming air from the intake manifold gives you up to 5% more horsepower and torque. Our Thermal Intake Gaskets are made of high temp resistant plastics which can withstand up to 400° F.

[Check website for updated applications.](#)

## Adjustable Fuel Pressure Regulator & Fuel Rail Adapter Kit



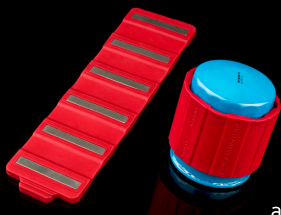
We have developed a compact sized fully adjustable fuel pressure regulator, for high performance racing vehicles. Fully CNC machined construction from 6061 billet aluminum.

Weapon-R adjustable fuel pressure regulators have threaded ports, which allows you to tailor the fuel regulator output to any configuration and is capable of supplying fuel to engines in excess of 800 horsepower. Our fuel rail adapters eliminate the OEM regulator for higher flow of fuel to the adjustable fuel pressure regulator.

[Check website for fuel rail adapter applications.](#)

Available in : Polished / Red / Blue / Gun Metal Grey

## 360 Magnetic Oil Filter Strap



Current oil filters remove dirt particles by filtering the oil through paper-based media with very small pores. While oil filters are necessary to remove damaging particles, it is equally important that it circulates into the engine fast enough to lubricate all moving parts.

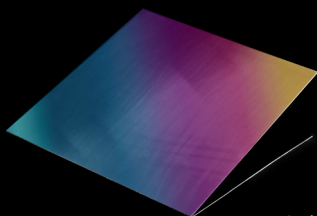
The perfect oil filter would stop all the particles down to 1-micron. Unfortunately, a filter with pores that small would also restrict the oil from returning to the engine at an efficient rate, resulting in engine failure.

Fluid dynamics require the pores in the filtering media to remain 25-micron or larger, which is why we designed the 360 Magnetic Oil Filter Strap which can help trap the metal particles that cause engine failure.

360 is universal and is made of high temperature resistant silicone, with Powerful Neodymium Magnets.

[Check website for sizes and colors.](#)

## Neo-Ti Treated Aluminum Sheets



We at Weapon-R love to influence individuality and innovation from personal custom designs, which is why we have developed the tools for you to explore your passion for car modification.

We are now offering flat sheets of aluminum in our new Neo-Ti Color Treatment. Express your creative side..

[Check website for available sizes.](#)

## Weapon-R Gear



## Weapon-R Pitcrew Gear



## Weapon-R Decals





**Authorized Dealer**



**WEAPON - R USA**

180 Sylvester Rd. South San Francisco, Ca 94080  
Tel 1.650.877.8280 Fax 1.650.877.8290  
[www.weapon-r.com](http://www.weapon-r.com)



***FREE GIFTS!***

*Send in a picture of your WR parts installed to enter in a random drawing. Winners are picked monthly and posted on [WWW.WEAPON-R.COM](http://WWW.WEAPON-R.COM)*